

PLAN EPP134446

SCALE 1:750



The intended plot size of this plan is 560mm in width by 432mm in height (C size) when plotted at a scale of 1:750.

LEGEND

- Found Standard Iron Post
- Placed Standard Iron Post
- ⊕ Found Control Monument

Integrated Survey Area No. 4, City of Kelowna NAD83 (CSRS) 2002.0

Grid bearings are derived from GNSS observations and are referred to the central meridian of UTM Zone 11 (117° West Longitude).

The UTM coordinates and estimated absolute accuracy achieved are derived from dual frequency GNSS observations to CANNET Active Control Station BC_Kelowna.

The coordinates and absolute accuracies shown on this plan are a result of an independent and accurate GNSS survey and do not represent official published coordinates.

This plan shows horizontal ground-level distances, unless otherwise specified. To compute grid distances, multiply ground-level distance by the average combined factor of 0.999930. The average combined factor has been determined based on an ellipsoidal elevation of 357 metres.

This plan lies within the Regional District of Central Okanagan.

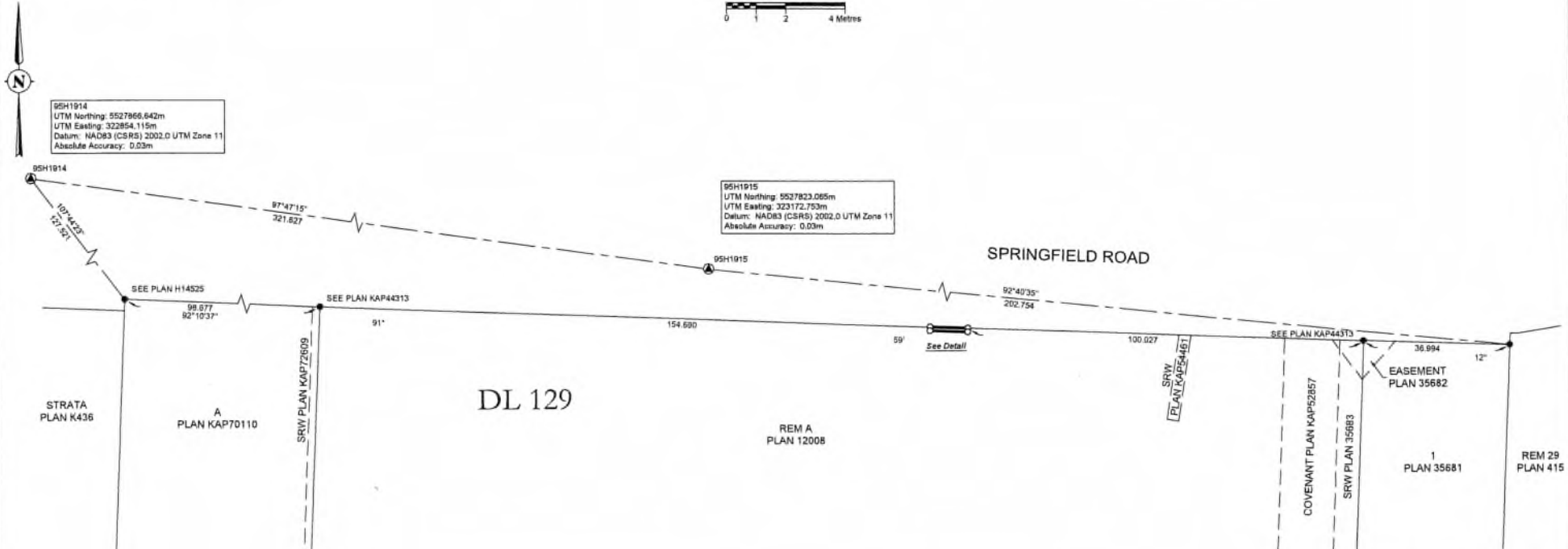
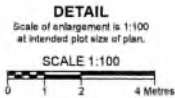
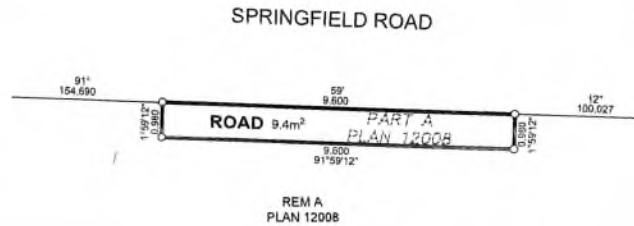
This plan lies within the jurisdiction of the Approving Officer for the City of Kelowna.

The field survey represented by this plan was completed on the 4th day of December, 2023.

Alexander Christian Dzielski, BCLS 1035

REFERENCE PLAN OVER PART OF
LOT A DISTRICT LOT 129
OSOYOOS DIVISION YALE
DISTRICT PLAN 12008 EXCEPT
PLANS 35681 AND KAP44313

PURSUANT TO SECTION 107 OF THE LAND TITLE ACT
BCGS 82E.083



VECTOR
GEOMATICS LAND SURVEYING LTD.

111-810 Clement Ave
Kelowna, B.C. V1Y 0J7
Ph: (250) 868-0172
www.vectorgeomatix.com

FILE No.: 2302053R0 Date: 2023-12-14 Drafted by: NS
DRAWING No.: 2302053 EPP134446 RD